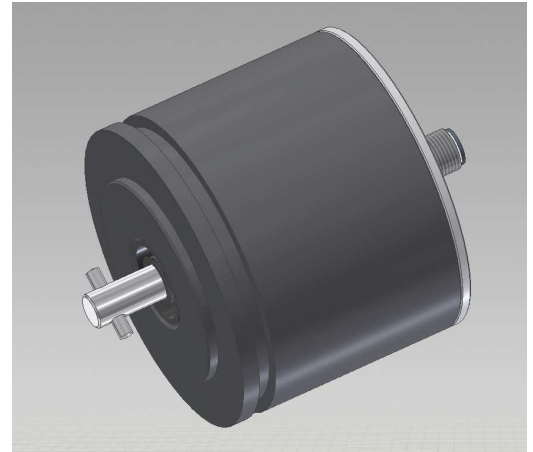


- Measuring range : 24180°
- Resolution : 16 Bit full span
- Output signal : 4 - 20 mA
- Excellent Linearity : $\pm 0.0058\%$ full scale
- Excellent repetition accuracy : $\pm 0.0029\%$ full scale
- Working temperature range : -40°C to $+85^{\circ}\text{C}$
- Absolute value



Application

Due to its excellent technical specifications, the XTB90 is suitable for reliable measurements in harsh environments. It is optimized for use at slow drives.

Technology

The angle information is captured by a magnetic measuring system and converted into an analog Signal 4 - 20 mA.

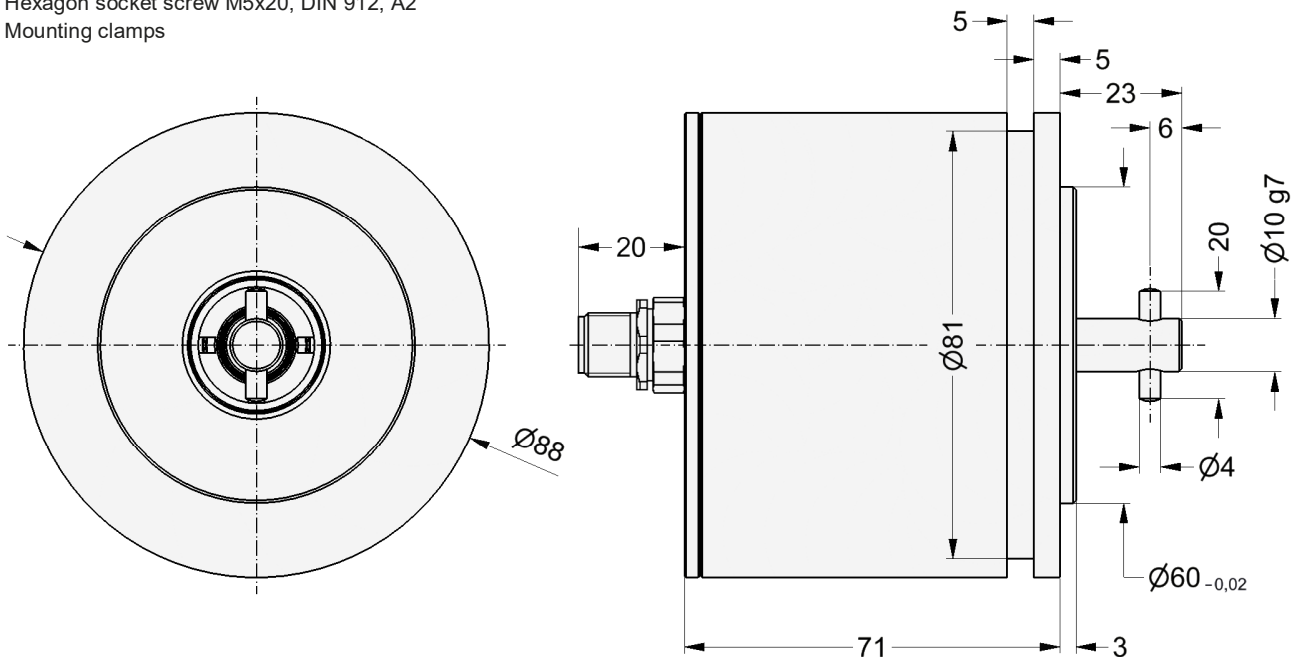
Dimensions

Additional scope of delivery:

4x Spring lock ring B5, DIN 127, A2

4x Hexagon socket screw M5x20, DIN 912, A2

4x Mounting clamps



Assembly

- Anodized Aluminum-Housing, protection class IP 67
- Connector M12 / 5-pole / protection class IP 67 (with screwed mating connector)
- For mounting the housing use the 4 enclosed screws.

Technical Data

Electrical Data

Power supply :	9 - 30 V DC \pm 20 %
Measuring range :	67.167 turns (24180°)
Output signal :	4 - 20 mA
Resolution	16 bit
Linearity :	± 0.0058 % full scale
Repetition accuracy:	± 0.0029 % full scale
Temperature coefficient :	typical 15 ppm /°C

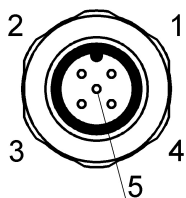
Environmental Conditions

Operating Temperature :	-40 °C to +85 °C
Humidity :	5 % to 95 %

Housing

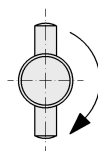
Housing :	AlMgSi1 anodized (sea-water resistant)
Shaft / Coupling :	Stainless steel (sealed with rotary shaft sealing)
Bearing :	Roller-contact bearing
Protection class :	IP 67 (EN 60529)
Weight :	1.2 kg
Dimensions :	Ø88 x 71 mm

Pin assignment



- 1 : Power supply
- 2 : 4 - 20 mA
- 3 : GND
- 4 : N.C.
- 5 : N.C.

Sense of direction



Signal increases when the shaft rotates clockwise.
(looking on the top of the shaft)

Output characteristic

